





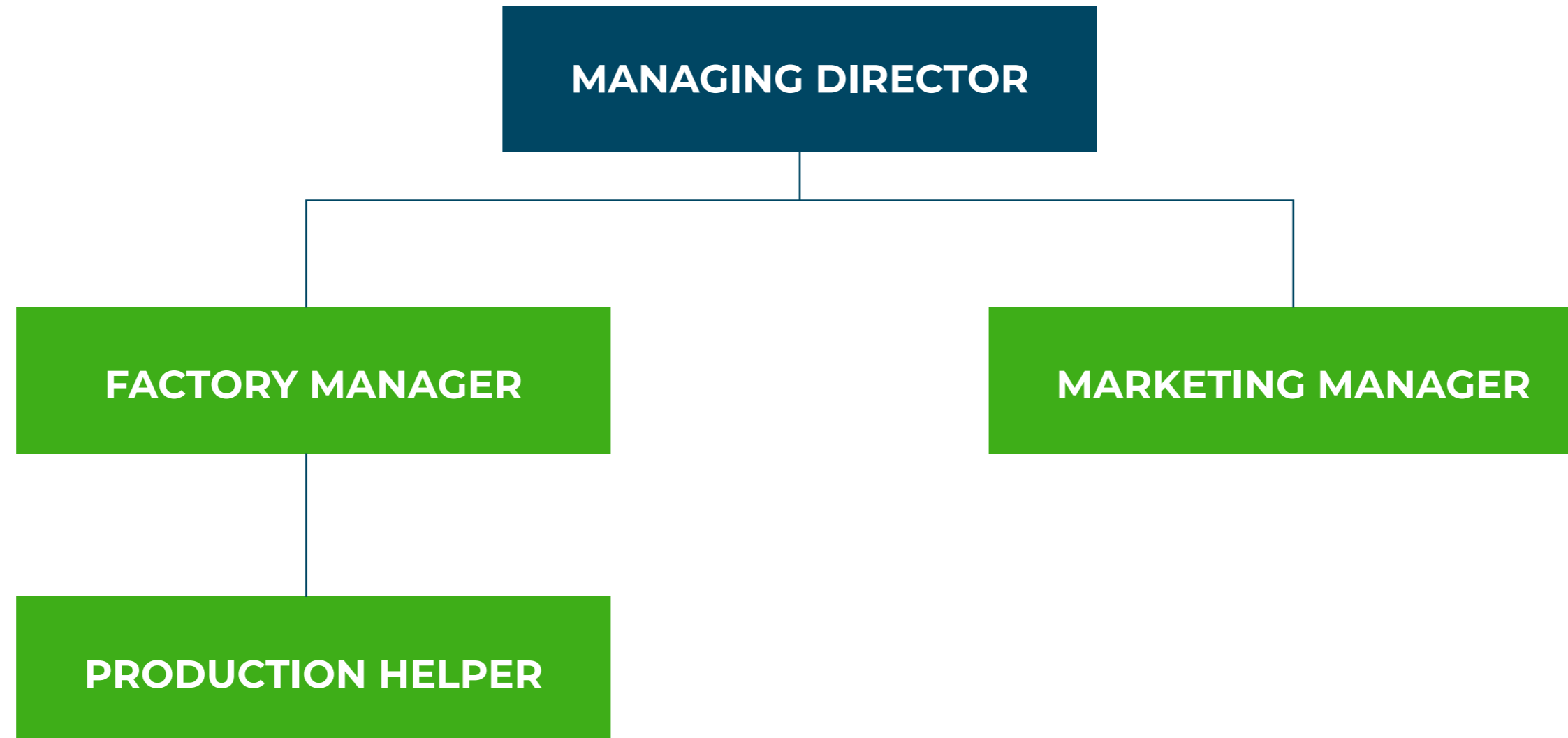
Bardu Valley Tea estate is located in a rather secluded village in the Ilam district in an altitude of 4000 feet from sea level.

The tea garden was started in 1952 A.D. with a single plant, which was planted by our grandfather Thari Jaman Singh Tamang. Later it was expanded but not to the extent of big garden till 1983 A.D. Our father Mr. Harka Ram Tamang started to expand to the extent of big garden since 1983 A.D. He has contributed a lot for this success.

This tea garden is in fact the outcome of the sole contribution of our father and mother, whose prolonged hardship brought the result of a beautiful garden and a factory as well.

Despite the lack of infrastructure, the company has been able to sustain the growth of business. The company also established its own factory a few years back which has helped in the employment of locals in the village. We still follow the traditional approach of farming for quality control. We also follow protocols as per National Tea and Coffee Development Board.

ORGANIZATIONAL STRUCTURE



Excluding the farmers there are 2 permanent staff and 7 seasonal staff.

CAPACITY



Avg Annual Production:
18,000 kg



Total plantation area:
12.72 Hectare

IMPACT

Over 61 households have been positively affected by Horizon Bardu Valley Tea in both economic and social aspects.

The majority of them belong to the same village.



TYPES OF TEA PRODUCED

**Orthodox
Black Tea**

White Tea

Silver Needles

Golden Tips

Horizon Gold

... and more

OUR PRODUCTS / B2C TEA BRANDS



GLOBAL PRESENCE / MAIN EXPORT DESTINATIONS

Major Export:

INDIA

Special Tea Export:

USA



CONTACT
9852674930
barduvalley.com